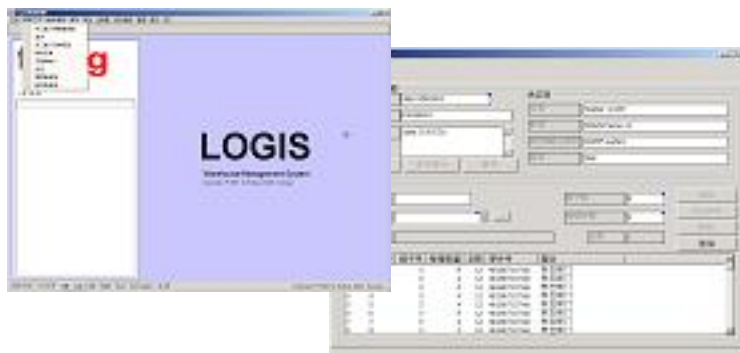




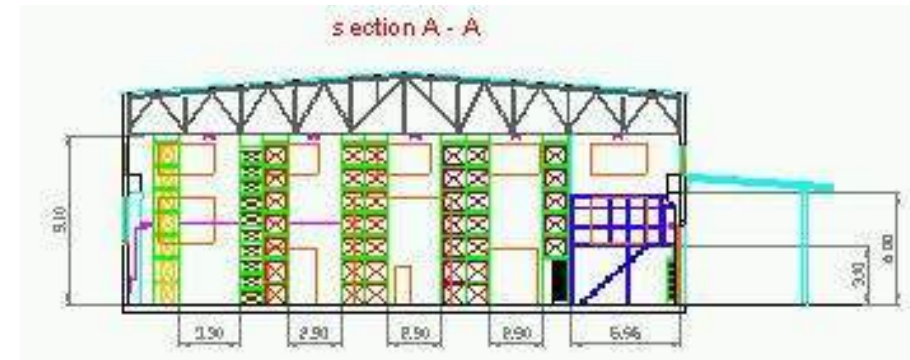
FAW- Johnson Controls , China  
logistics centre

Warehouse and storage spaces of FAW-JC were spread throughout many different sites at Changchun so coordination and supply of the production caused considerable operating expenditure and were especially due to the JIT-demand of FAW-VW hardly justifiable.

- Planning of the logistic and IT-solution for a JIS-centre for seats and interior
- Construction planning
- Realization IT (WMS, RF-system for forklifts)
- Project management



- » FAW / Johnson Controls DC
- » 14 Container a day material entry
- » Warehouse Area ~ 2.900 m<sup>2</sup>
- » Delivery to material entry of the Customer
- » Empty bin cycle
- » Ramp up



- » Logis WMS in chinese version
- » Rack Storage and Block Storage
- » Handling of SLT, GLT and KLT
- » RF-functionality
- » Online communication to CY
- » Online communication to HOST